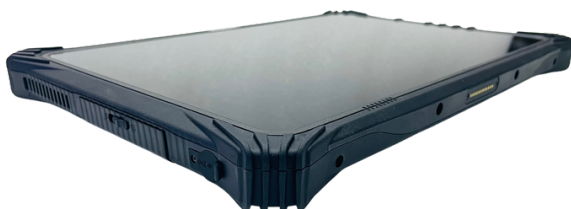


# LOAD MONITORING SYSTEM

## PRECISE MONITORING AND CONTROLLING FOR JACKUP RIGS

Load Monitoring System is basically a touch screen display with graphical representation. It helps to monitor the crane operations. The hook load, operating radius and duty. The display will have various unit indications such as Tonne, Lbs., Feet, and Meters. The tension on lines and hooks are displayed in real time in a software. It also delivers an alarm with display indication and sound to warn the operators in case of loads and of any dangerous imbalance. A protective casing for the safety of touch panel is also provided.



## WHY SMEC?

### Features:

- Simple interface
- Precise Indication
- Angle inclination
- Touch Pad that is portable
- Safety casing
- Overturning / Tipping
- Additional communication ports
- Windows and Android platform available
- Graphical representation
- Modification based on customer requirements