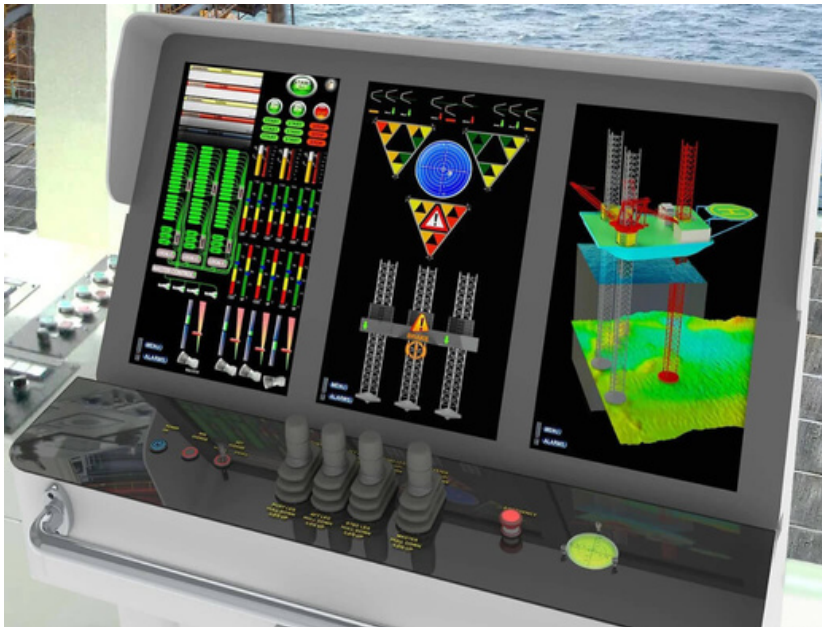


# RPD SYSTEM

## PRECISE CONTROL FOR JACKUP RIGS

RPD System is a Rack Phase Differential monitoring system used in a jack-up Rig for precise recording of rack phase differences for all three legs of the jack-up rig. It gives accurate information of electronic and mechanical measurements to the operator for a controlled operation. It helps to avoid leg over stresses during jacking process.

Among the three legs of a jack up rig each individual leg consists of three daisy wheel sensors for each chord. This adds to a total of nine for a single jack up rig.



## WHY SMEC?

### Features:

- Avoids leg over stresses
- Speeds up deployment and recovery safely
- Eliminates risks of damage
- HMI for easy monitoring and control operation
- Graphical representations with precise indication and numerical values
- Alarm information can be generated
- Data can be recovered from trends
- New / Retrofit / Repair can be done
- Manufactured and commissioned for easy operations
- Automation control systems installed for smooth operations
- Individual motors working in required torque settings
- IO Pints and remote IO racks